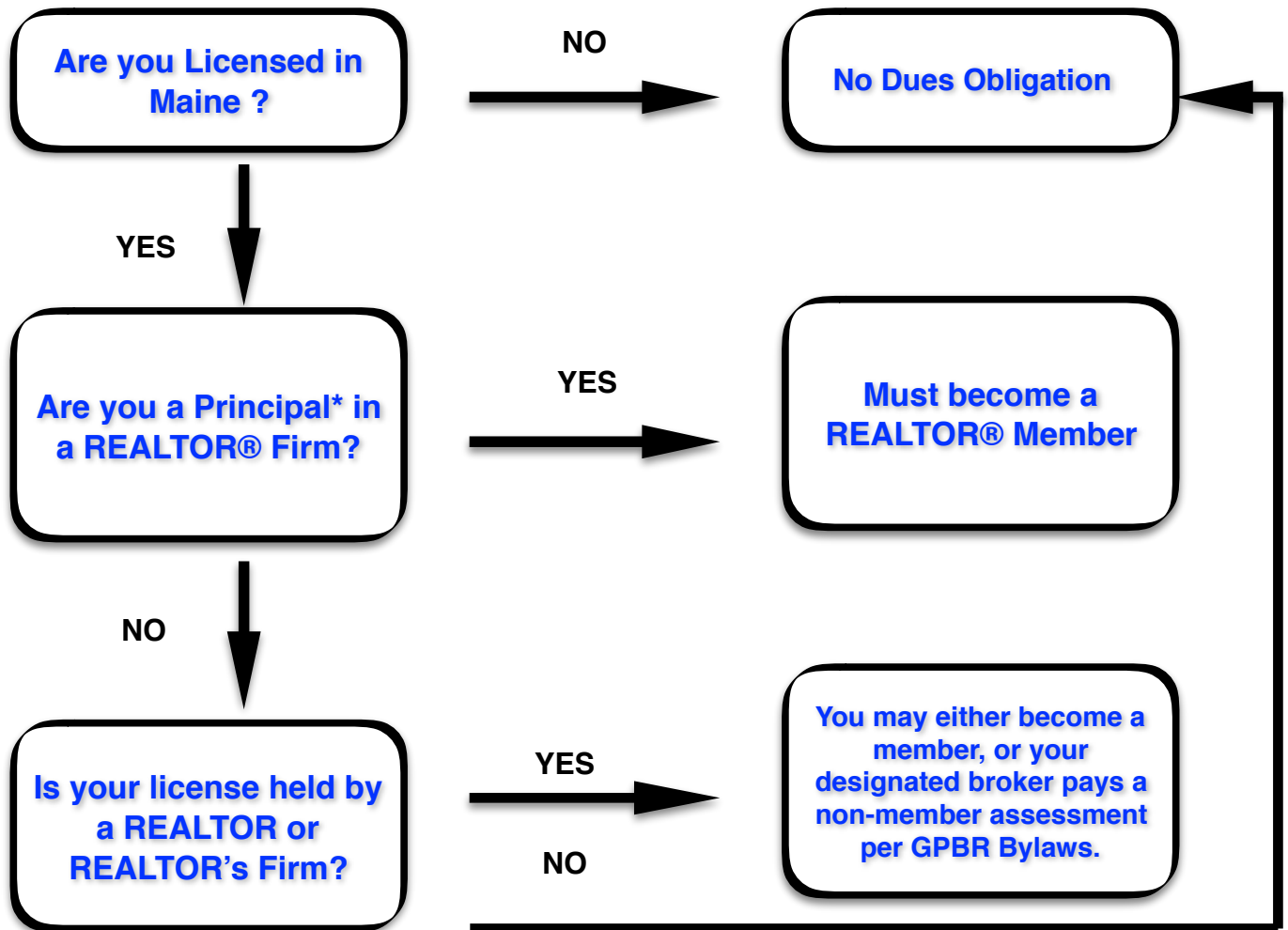




Greater Portland Board of REALTORS Dues Flow Chart Do I need to become a member?



* **Clarification of the Term "Principal"** - The Principal was used in the NAR Constitution and Bylaws and in other relevant policies, includes licensed or certified individuals who are sole proprietors, partners in a partnership, officers or majority shareholders of a corporation, or office managers (including branch office managers) acting on behalf of principals in a real estate firm. (Adopted 11/1996)

GPBR Bylaws Article IV

(a) **REALTOR® Members.** REALTOR® Members, whether primary or secondary shall be:

1. Individuals who, as sole proprietors, partners, corporate officers or branch office managers, are engaged actively in the real estate profession, including buying, selling, exchanging, renting or leasing, managing, appraising for others for compensation, counseling, building, developing or subdividing real estate, and who maintain or are associated with an established real estate office in the state of Maine or a state contiguous thereto. All persons who are partners in a partnership, or all officers in a corporation, who are actively engaged in the real estate profession within the state or a State contiguous thereto, shall qualify for REALTOR® Membership (except as provided in the following paragraph) only and each is required to hold REALTOR® membership in a board of REALTORS® within the state, or a State contiguous thereto, unless qualified for Institute Affiliate Membership as described in Section 1(b) of Article IV.